



# *EU Labour Force Survey 2011 & Statistics on Income and Living Conditions: First results for persons with disabilities*

**Pascal Wolff**  
**Lucian Agafitei**  
**Eurostat – F5**

# Outline

- 1. ESS data sources on disability**
- 2. Dissemination of disability data**
- 3. Some results from LFS and SILC**

## 4 ESS data sources on disability

- **Labour Force Survey** ad hoc modules on employment of disabled people (2002, 2011, ?)
  - **Aim:** provide information on the participation of disabled people in the labour market and in education and training
  - **Data dissemination:** 34 datasets online since July 2014
  - **Key output(s):** EU indicators on employment and education & training by disability status, notably the **Europe 2020 headline indicators**
  - **Concept:** (detailed) difficulties in basic activities (BAD)

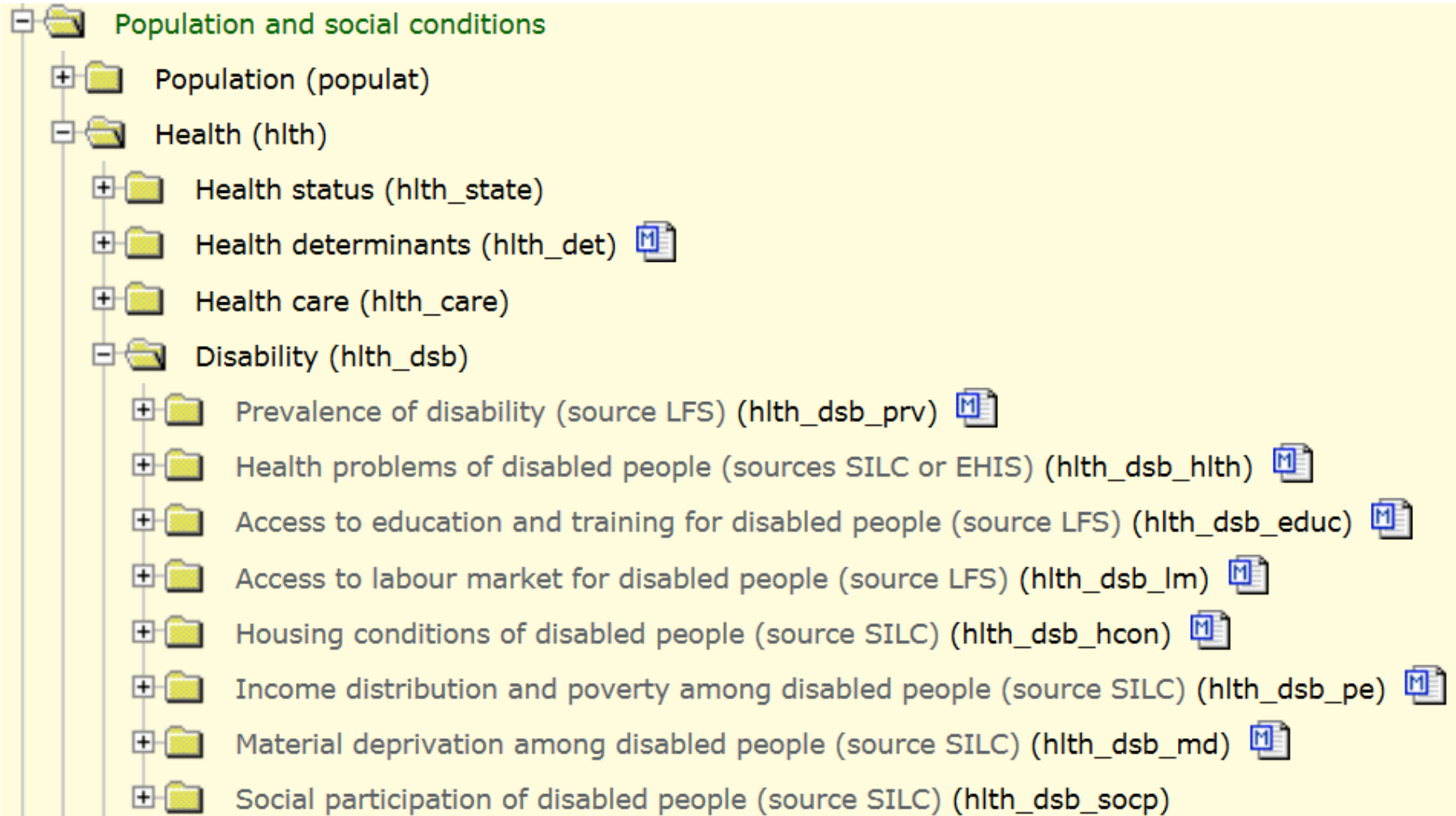
## 4 ESS data sources on disability

- **Statistics on Income and Living Conditions**
  - **Aim:** provide information on income, social inclusion and living conditions
  - **Periodicity:** annual
  - **Data dissemination:** 38 datasets online since October 2014
  - **Key output(s):** EU indicators of poverty and social exclusion, living conditions by activity limitation status, notably the **Europe 2020 headline indicator**
  - **Concept:** global activity limitation (GALI)

## 4 ESS data sources on disability

- **European Health and Social Integration Survey (1-shot, 2012-2013)**
  - **Aim:** provide detailed information on disabled people
  - **Data dissemination:** delayed because of technical issues
  - **Concepts:** biopsychosocial concept, (instrumental) activities of daily living, BAD and GALI
- **European Health Interview Survey (2008, 2014, 2019?)**
  - **Aim:** provide detailed information on citizens health
  - **Data dissemination:** 2016
  - **Concepts:** Some BAD (functional), (instrumental) activities of daily living (only 65+) and GALI

# Dissemination of disability statistics – data tree



# Online publication on disability

- Online since beginning of December 2014
- Presenting recent statistics on the situation of disabled people in the EU
- Access via table of contents to SE articles

## Disability statistics

Disability statistics is an online Eurostat publication presenting recent statistics on the situation of disabled people in the European Union (EU).

### Introduction [\[edit\]](#)

[Disability statistics introduced - Under construction](#)

[Main features and legal basis - Under construction](#)

### 1. The population of disabled people [\[edit\]](#)

*Under construction*

### 2. Health status of disabled people [\[edit\]](#)

*Under construction*

### 3. Need for assistance or support and offer [\[edit\]](#)

*Under construction*

### 4. Disabled people on the labour market [\[edit\]](#)

[4.1 Labour market access - published 2/12/2014](#)

[4.2 Employment patterns - Under construction](#)

[4.3 Barriers to employment - Under construction](#)

### 5. Access to education and training - [published 2/12/2014](#) [\[edit\]](#)

### 6. Social inclusion [\[edit\]](#)

*Under construction*

### 7. Poverty and income inequalities - [published 2/12/2014](#) [\[edit\]](#)

### 8. Financial situation [\[edit\]](#)

*Under construction*

### 9. Housing conditions [\[edit\]](#)

*Under construction*

### 10. Accessibility of services [\[edit\]](#)

*Under construction*

### 11. Social participation [\[edit\]](#)

*Under construction*

### 12. Methodological annex [\[edit\]](#)

[12.1 Labour force survey - overview - Under construction](#)

[12.2 Labour force survey - comparability and accuracy - Under construction](#)

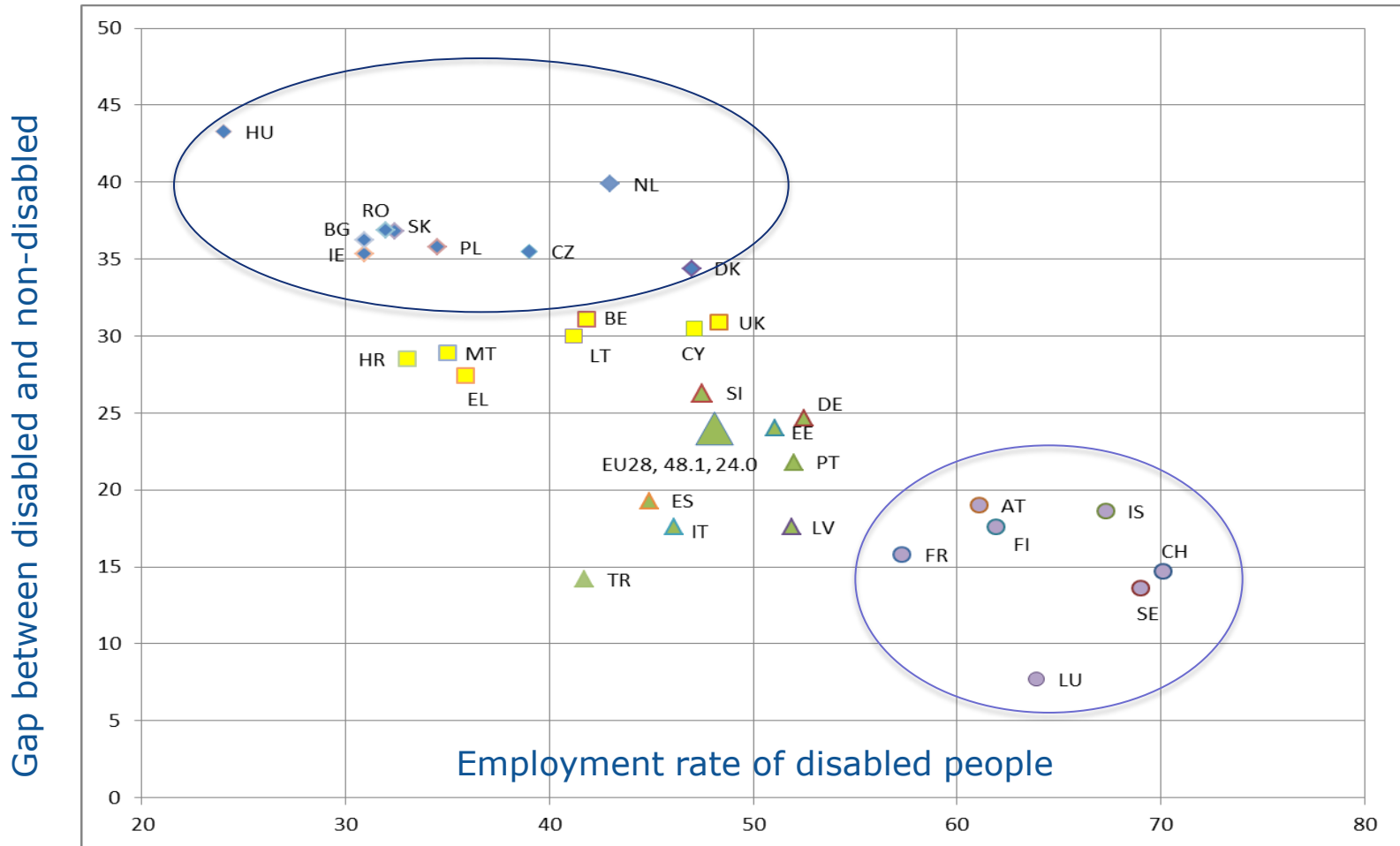
[12.3 Labour force survey - non-response analysis - Under construction](#)

[12.4 Labour force survey - proxy analysis - Under construction](#)

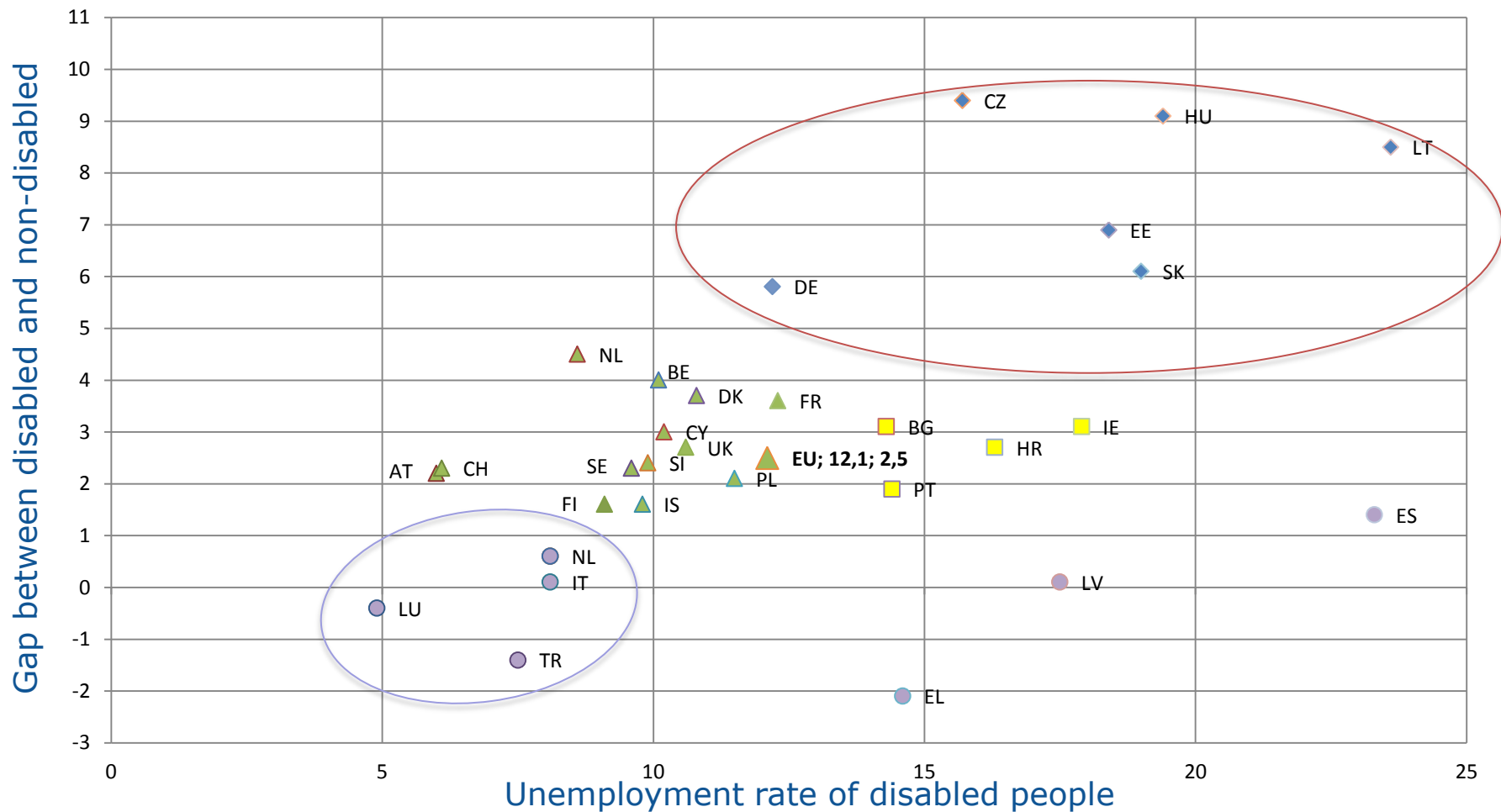
# Some results from LFS and SILC about persons with disabilities



# Employment rate of disabled people (%), 2011



# Unemployment rate of disabled people (%), 2011



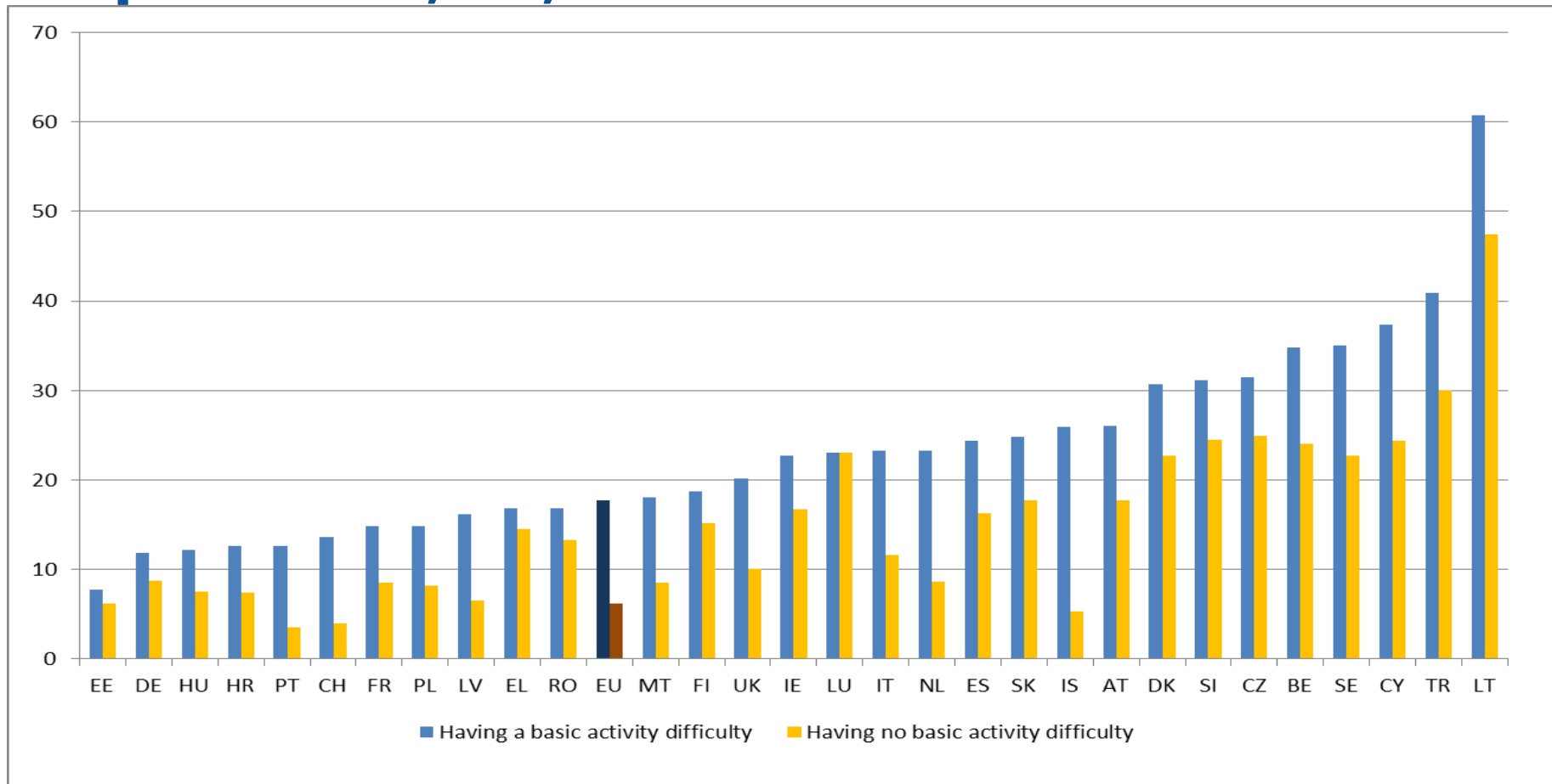
# Employees with a permanent job

## EU-28 level:

- 88.2% for people with BAD
- 86.0% for people with no BAD

Highest gaps: **CY** (11 pp more for people with BAD), **SI** (9 pp more for people with BAD) and **HR** (7 pp more for people with BAD)

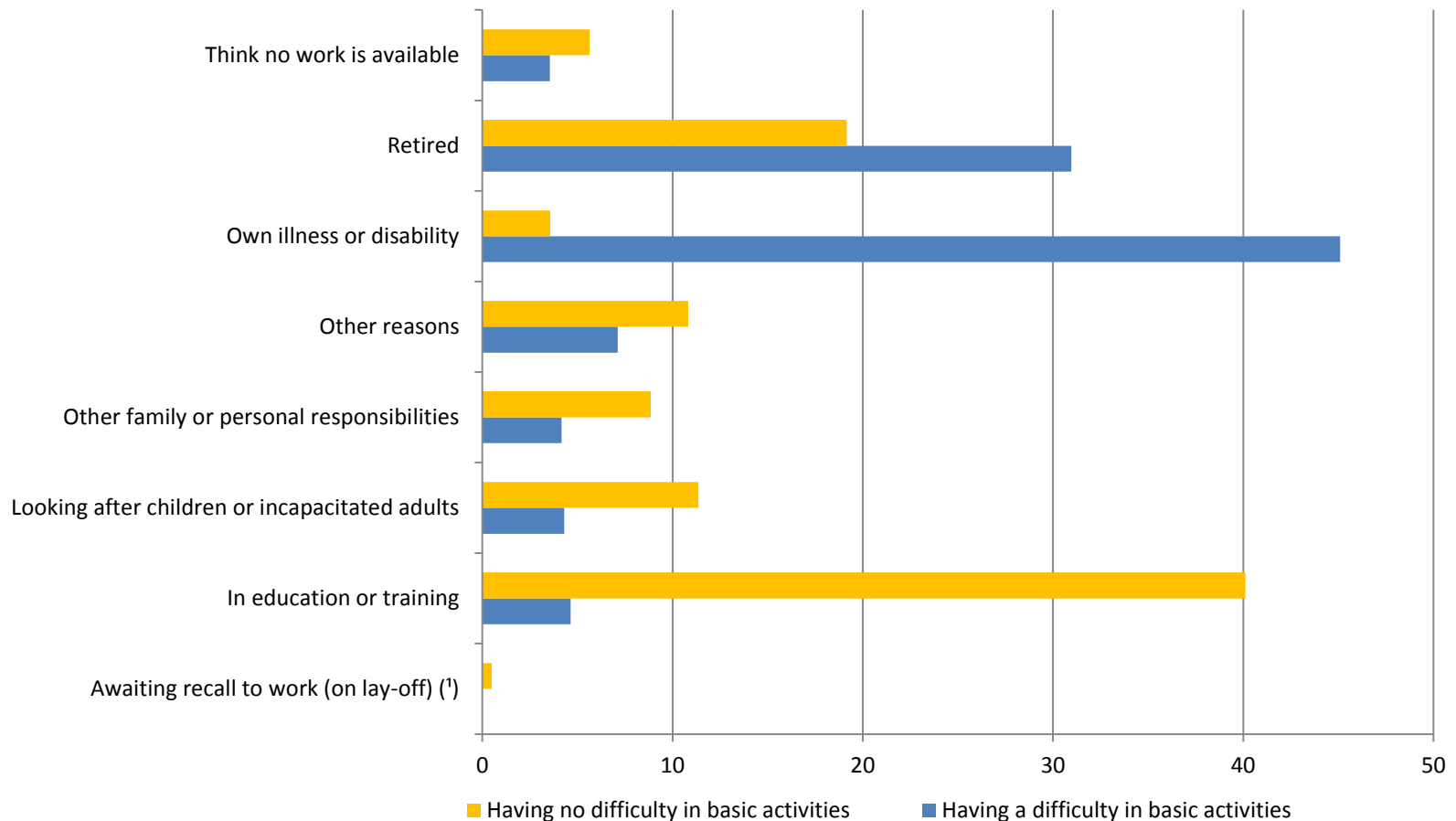
# Employed persons aged 15-64 working part-time, %, 2011



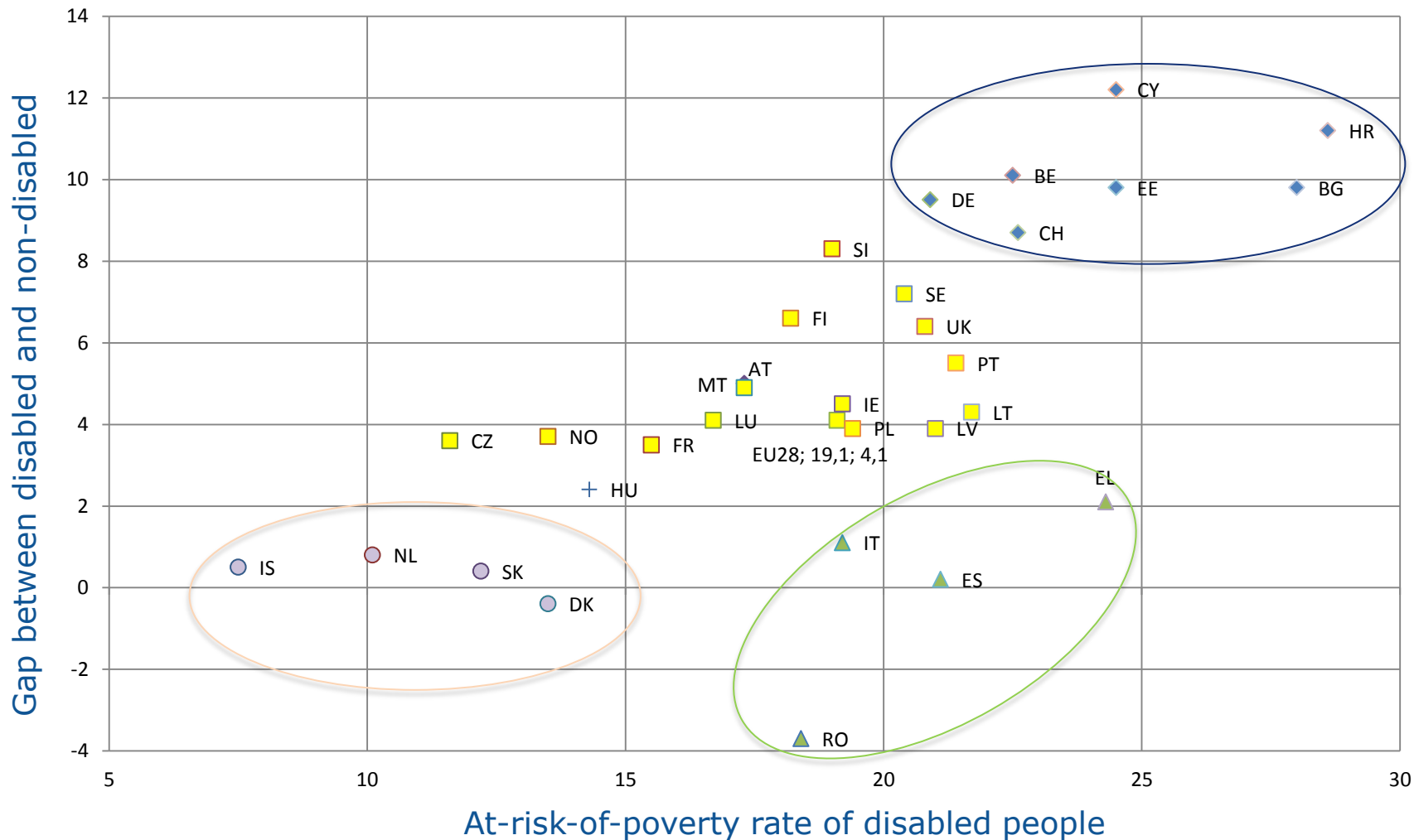


European  
Commission

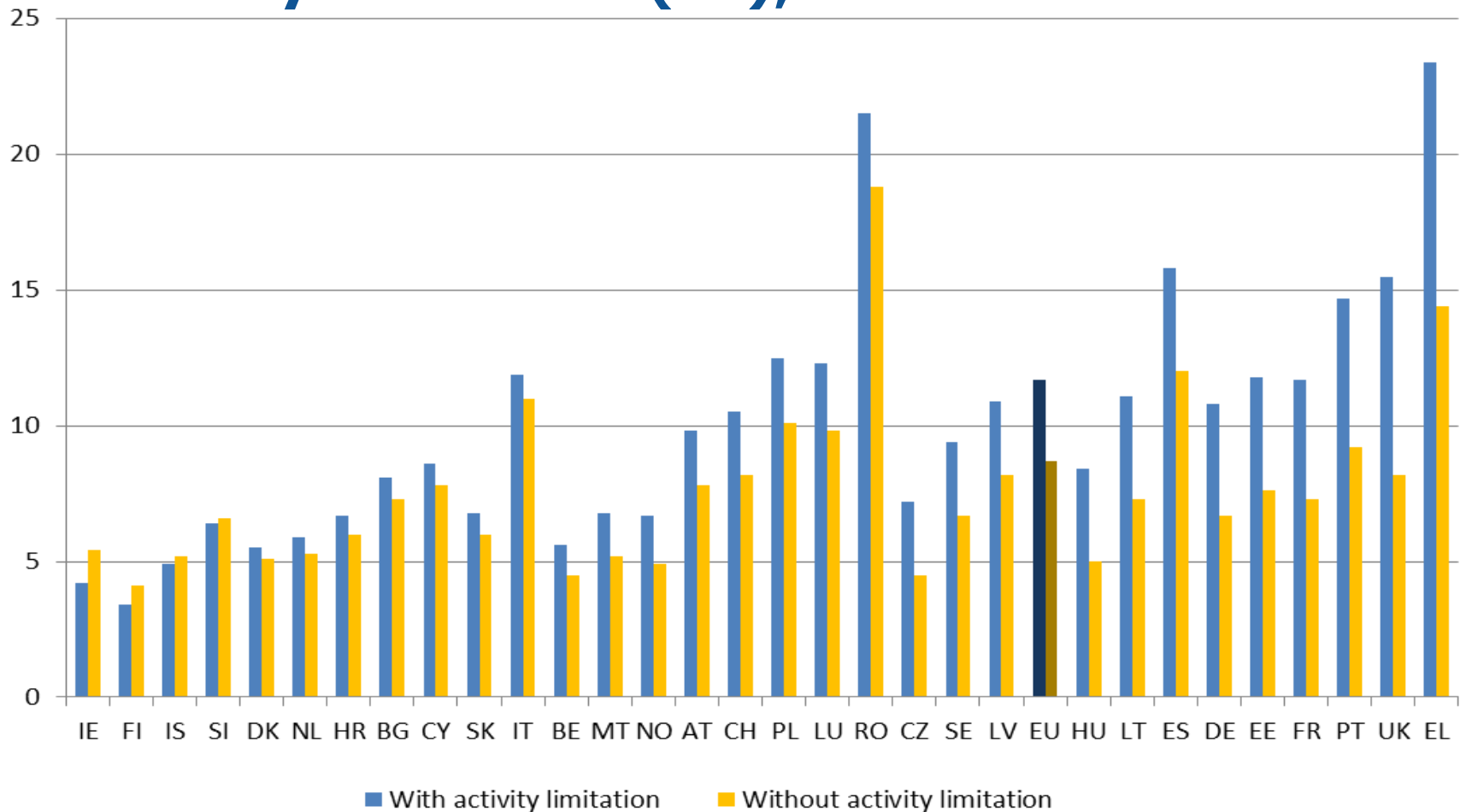
# Main reason for not seeking employment for inactive persons aged 15-64, EU-28, %, 2011



# At-risk-of-poverty rate of disabled people (%), 2012



# In-work at-risk-of-poverty rate by level of activity limitation (%), 2012





European  
Commission

# Thank you